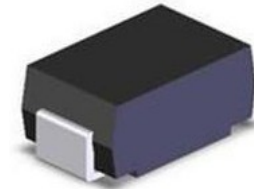


## Features

- Low reverse leakage
- High forward surge capability
- High reliability
- High temperature soldering guaranteed:  
260 °C/10seconds
- Lead and body according with RoHS standard
- Green compound with suffix "-F" on Marking



## DO-214AC/SMA

## Mechanical Data

- Case:DO-214AC Molded plastic
- Epoxy: UL 94V-0 rate flame retardant
- Lead: Pure tin plated, lead free

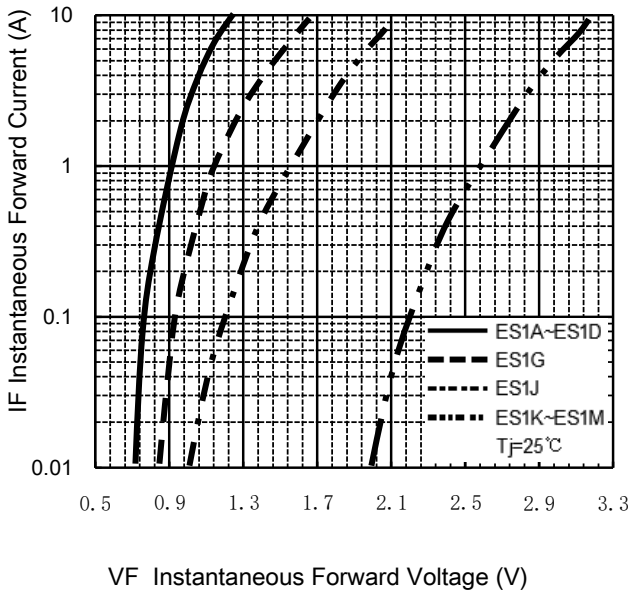
## Maximum Ratings & Characteristics

Ratings at 25°C ambient temperature unless otherwise specified.

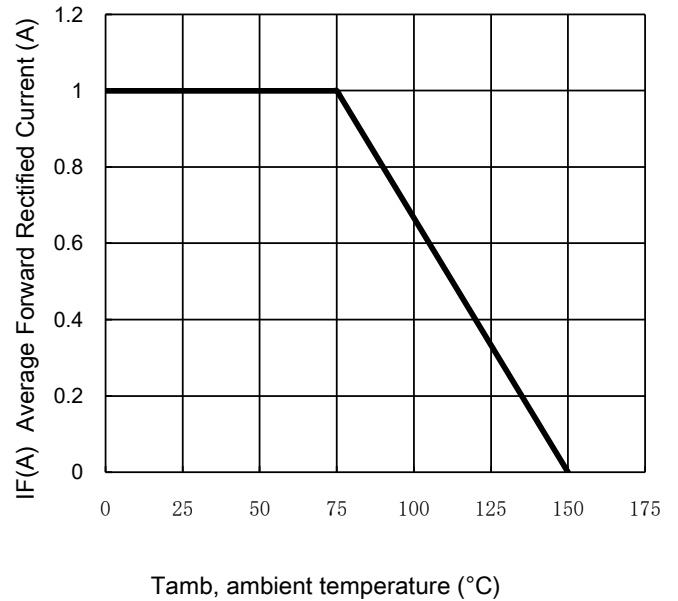
Parameter	Symbols	ES1A	ES1B	ES1D	ES1G	ES1J	ES1K	ES1M	Unit
Maximum repetitive peak reverse voltage	$V_{RRM}$	50	100	200	400	600	800	1000	V
Maximum RMS voltage	$V_{RMS}$	35	70	140	280	420	560	700	V
Maximum DC blocking voltage	$V_{DC}$	50	100	200	400	600	800	1000	V
Maximum average forward rectified current	$I_{F(AV)}$	1.0							A
Non-repetitive peak forward surge current 8.3 ms singlehalf sine-wave	$I_{FSM}$	30					25		A
@ $I_F=1.0A$ Maximum forward voltage	$V_F$	0.95		1.25	1.70	3.20		V	
@ $V_{DC}$ Maximum reverse current	$I_R$	5							μA
$T_A= 25^{\circ}C$ $T_A= 125^{\circ}C$		100							
$I_F=0.5A$ , $I_R=1.0A$ , $I_{RR}=0.25A$ MAX. reverse recovery time	$T_{RR}$	35							nS
Typical thermal resistance (Note 1)	$R_{\theta JA}$	105							°C/W
$V_R=4.0V$ , $f=1MHz$ Type junction capacitance	$C_J$	15							pF
Operating junction temperature rang	$T_J$	-55 --- +150							°C
Storage temperature rang	$T_{STG}$	-55 --- +150							°C

## Characteristic Curves

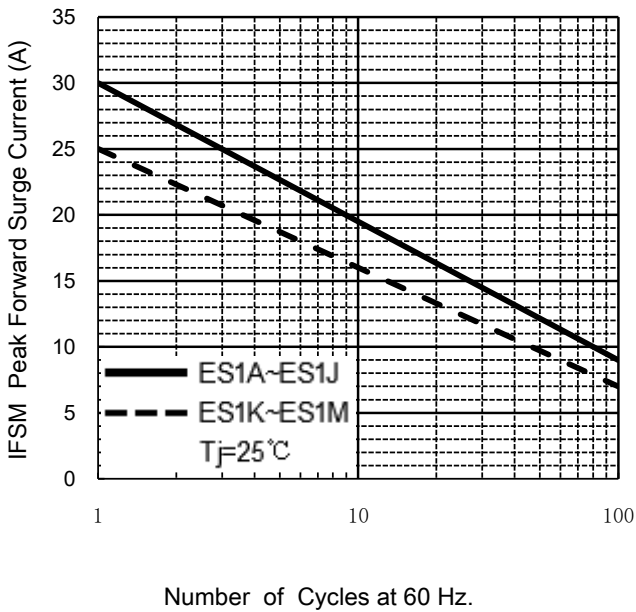
TYPICAL FORWARD CHARACTERISTIC



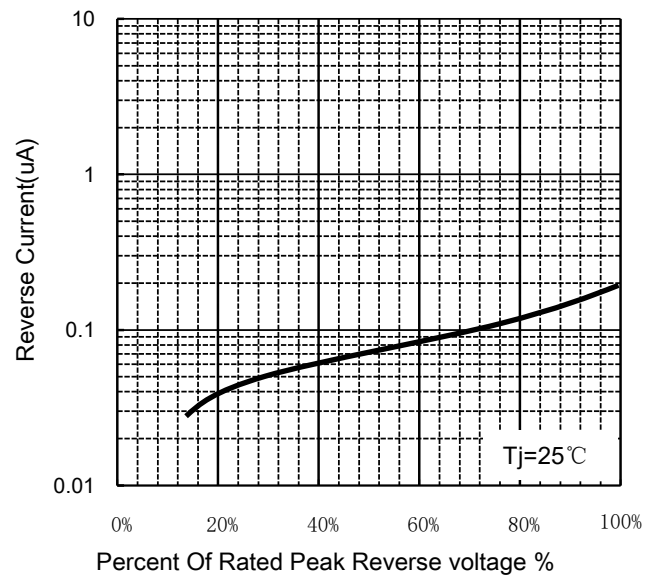
FORWARD CURRENT DERATING CURVE



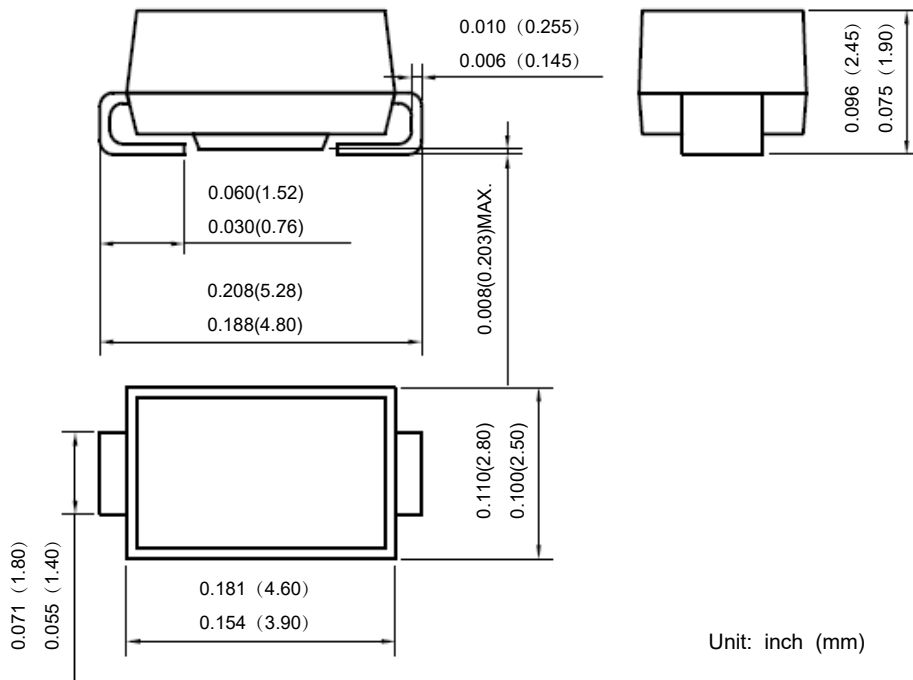
MAXIMUM NON REPETITIVE PEAK FORWARD SURGE CURRENT



TYPICAL REVERSE CHARACTERISTICS



**Package Outline**



**Package Information**

Qty: 5,000/Tape and reel